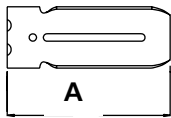


Rack Mounting Brackets

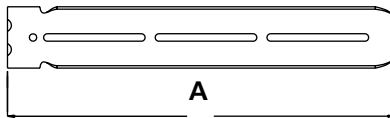
| Model Numbers | A | A | B | B | B | C | D | E | F |
|-------------------|-----------------|------------------|----------------|----------------|----------------|---------------|----------------|----------------|---------------|
| | <i>Short</i> | <i>Long</i> | <i>4 Hole</i> | <i>3 Hole</i> | <i>2 Hole</i> | | | | |
| 201, 204A-LR, 301 | 4.51 [114.6] | 11.01 [279.7] | 2.50 [63.5] | 1.65 [41.9] | 1.51 [38.4] | .72 [18.3] | .29 [7.4] | .66 [16.8] | .60 [15.2] |
| 305A-LR | 4.31 [109.5] | 10.81 [274.6] | 2.50 [63.5] | 1.65 [41.9] | 1.51 [38.4] | .78 [19.8] | .29 [7.4] | .72 [18.3] | .60 [15.2] |
| 2907 | 3.04 [77.1] | 6.04 [153.3] | - | 1.74 [44.2] | - | .69 [17.4] | .213 [5.41] | .213 [5.41] | .63 [15.9] |
| | - | 11.04 [280.4] | - | 1.63 [41.4] | - | .69 [17.4] | .213 [5.41] | .213 [5.41] | .63 [15.9] |
| 3301, 3307, 3308 | 4.51 [114.6] | 11.01 [279.7] | 2.50 [63.5] | 1.75 [44.5] | 1.75 [44.5] | .72 [18.3] | .29 [7.4] | .55 [14.0] | .60 [15.2] |
| 3507 | 3.01 [77.6] | 6.06 [153.8] | - | 2.19 [55.7] | - | .70 [17.8] | .213 [5.41] | .213 [5.41] | .63 [15.9] |
| 3601, 3607 | 4.74 [120.4] | 11.00 [279.4] | 2.50 [63.5] | - | - | .72 [18.3] | .29 [7.4] | .51 [13.0] | .60 [15.2] |

- See Rack Mounting Accessories Selection Guide at accuride.com for ordering part numbers.
- Brackets shown below are for Models 201/204A-LR/301 and are shown for representation only.

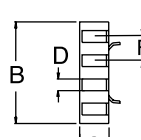
SHORT BRACKET



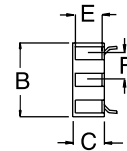
LONG BRACKET



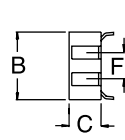
4-HOLE



3-HOLE



2-HOLE

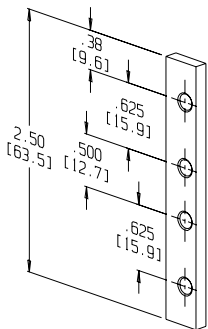


Bar Nuts

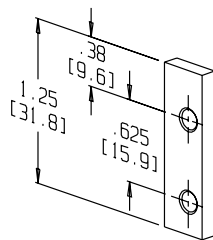
- Bar nuts simplify the installation and adjustment of Accuride slides in electronic enclosures
- It is easier to install bar nuts than individual nuts when access to the slide mounting bracket is limited
- Order 4 bar nuts per pair of slides

The following dimensions apply to all bar nuts:

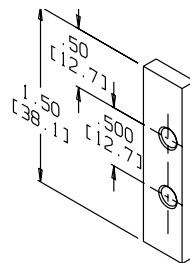
- Thickness of bar nut: .13 [3.2]
- Width of bar nut: .38 [9.6]
- Mounting holes: #10-32 thread
- Mounting holes/center to edge: .14 [3.6]



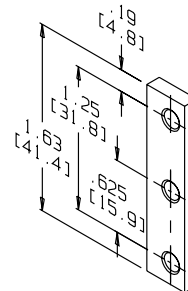
4100-0101-CE



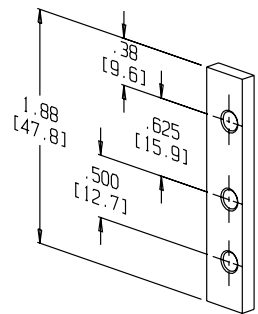
4100-0103-CE



4100-0106-CE



4130-0102-CE



4100-0108-CE